

Comatrol

RESPONSIVENESS IN MOTION

Member of the Danfoss Group



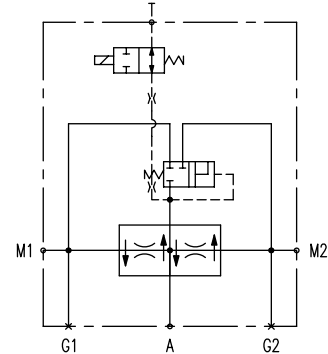
Traction Control HICs

www.comatrol.com

OPERATION

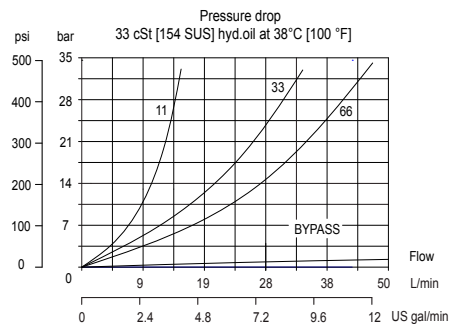
This valve provides electrically actuated traction control for hydrostatic systems with one pump and two motors in parallel. In normal operation, fluid passes freely through the valve. When the solenoid is energized, fluid is forced through the flow divider/combiner, preventing wheel spin or motor over speed.

Schematic



PERFORMANCE

Performance curve

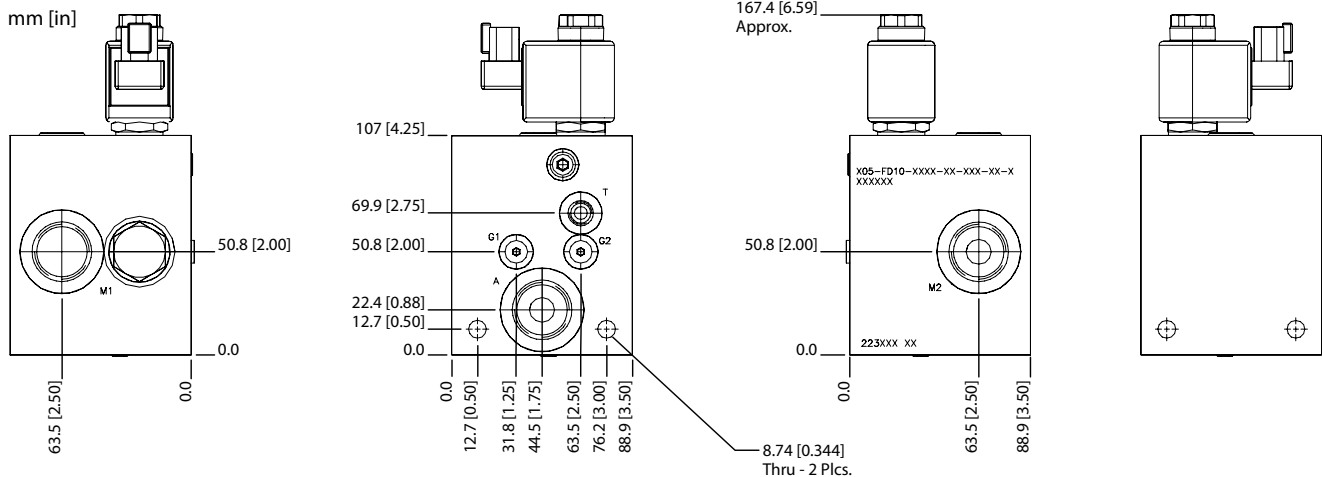


Specifications

Rated pressure	207 bar [3000 psi]
Rated flow at 7 bar [100 psi]	45 l/min [12 US gal/min]
Weight	2.79 kg [6.15 lb]
Bypass Cracking Pressure	3.1 bar [45 psi]

DIMENSIONS

mm [in]



ORDERING INFORMATION

X05-FD10-12S-66-12-DE-B

PORT SIZES & MATERIAL

6061 T6 ALUMINUM

8S = M1, M2 & A - #8 SAE
 G1 & G2 - #2 SAE
 T - #4 SAE

12S = M1, M2 & A - #12 SAE
 G1 & G2 - #2 SAE
 T - #4 SAE

4B = M1, M2 & A - 1/2 BSP
 G1 & G2 - 1/8 BSP
 T - 1/4 BSP

6B = M1, M2 & A - 3/4 BSP
 G1 & G2 - 1/8 BSP
 T - 1/4 BSP

SEALS
 B = BUNA-N
 V = VITON

TERMINATION

VOLTAGE
 SEE CATALOG
 FOR SV08-22-01

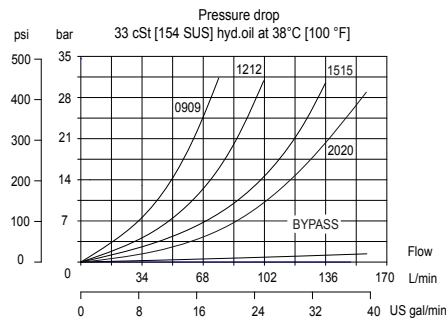
FLOW DIVISION
 SEE CATALOG
 FOR CP340-1

OPERATION

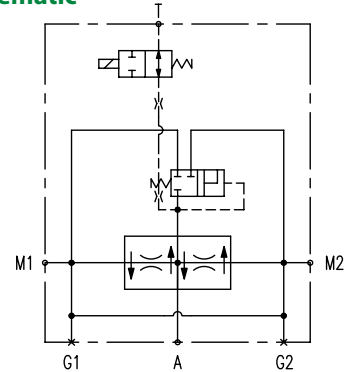
This valve provides electrically actuated traction control for hydrostatic systems with one pump and two motors in parallel. In normal operation, fluid passes freely through the valve. When the solenoid is energized, fluid is forced through the flow divider/combiner, preventing wheel spin or motor over speed.

PERFORMANCE

Performance curve



Schematic

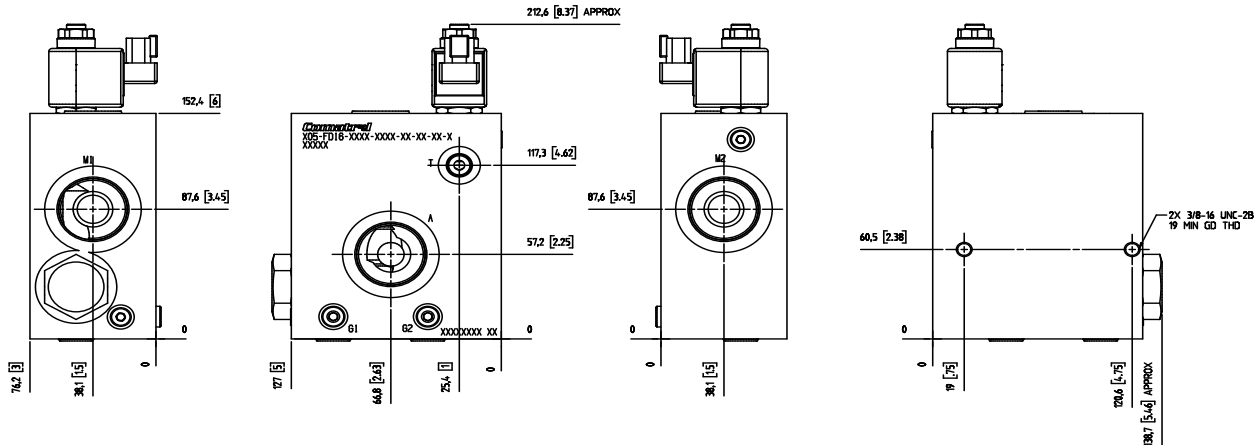


Specifications

Rated pressure	350 bar [5075 psi]
Rated flow at 7 bar [100 psi]	150 l/min [40 US gal/min]
Weight	4.48 kg [9.88 lb]
Bypass cracking pressure	3.8 bar [55 psi]

DIMENSIONS

mm [in]



ORDERING INFORMATION

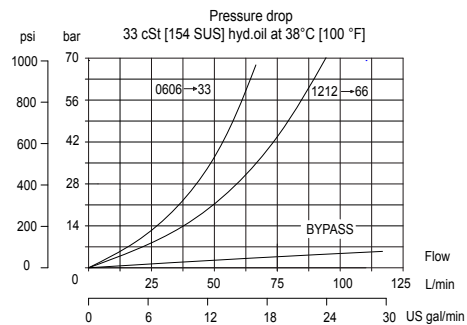
PORT SIZES & MATERIAL	X05-FD16-F04-1515-00-12-DE-B	SEALS
6061 T6 ALUMINUM, DUCTILE		B = BUNA-N
16S, S16S = M1, M2 & A - #16 SAE		V = VITON
G1 & G2 - #2 SAE		TERMINATION
T - #6 SAE		VOLTAGE
20S, S20S = M1, M2 & A - #20 SAE		SEE CATALOG FOR SV08-22-01
G1 & G2 - #2 SAE		ORIFICE 'E'
T - #6 SAE		00 - PLUG
F04, SF04 = M1, M2 & A - 1" CODE 61		59 - .0590
G1 & G2 - #2 SAE		79 - .0790
T - #6 SAE		FLOW DIVISION
8B, S8B = M1, M2 & A - 1 BSP		SEE CATALOG FOR CP342-3-U-0-XXXX
G1 & G2 - 1/8 BSP		PORT 'M2'
T - 3/8 BSP		PORT 'M1'
10B, S10B = M1, M2 & A - 1-1/4 BSP		
G1 & G2 - 1/8 BSP		
T - 3/8 BSP		

OPERATION

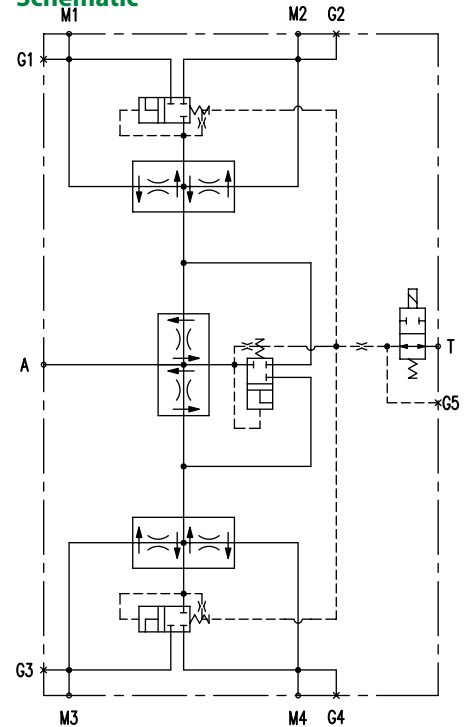
This valve provides electrically actuated traction control for hydrostatic systems with one pump and four motors in parallel. In normal operation, fluid passes freely through the valve. When the solenoid is energized, fluid is forced through the flow divider/combiners. The result is equal flow to all four motors, preventing wheel spin or motor over speed.

PERFORMANCE

Performance curve



Schematic



Specifications

Rated pressure	207 bar [3000 psi]
Rated flow at 7 bar [100 psi]	45 l/min [12 US gal/min]
Weight	8.74 kg [19.74 lb]
Bypass cracking pressure	3.1 bar [45 psi]

ORDERING INFORMATION

X05 - FD104 - 8S - 0303 - 11 - 12 - DE - B

PORT SIZES & MATERIAL

6061 T6 ALUMINUM
8S = M PORTS - #8 SAE
A1 & A2 - #10 SAE
T & G - #4 SAE
10S = M PORTS - #10 SAE
A1 & A2 - #12 SAE
T & G - #4 SAE

SEALS
B = BUNA-N
V = VITON
TERMINATION
VOLTAGE
SEE CATALOG FOR SV08-22-01
FLOW DIVISION
SEE CATALOG FOR CP340-1
FLOW DIVISION
SEE CATALOG FOR CP342-1

DIMENSIONS

See next page.

DIMENSIONS

mm [in]

