

MF08 - MFE08

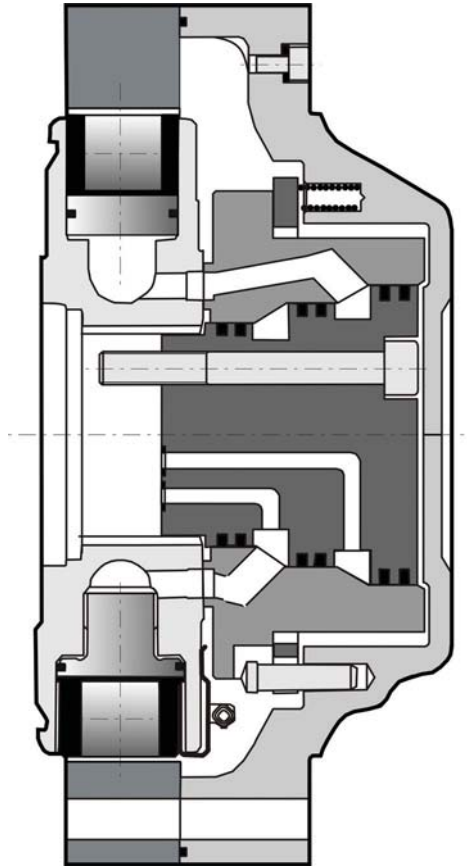
HYDROBASES

C				A	B	C	D	E	N
				mm[in.]	mm[in.]	mm[in.]	mm[in.]	mm[in.]	mm[in.]
1	1	1	0	Ø 175.7 [6.92 dia.]	Ø 225 [8.86 dia.]	Ø 265 [10.43 dia.]	253.45 [9.98]	Ø 334 [13.15 dia.]	Ø 285 [11.22 dia.]
1	2	3	4						
1	2	1	0	Ø 220.7 [8.69 dia.]	Ø 275 [10.83 dia.]	Ø 314 [12.36 dia.]	253.25 [9.97]	Ø 291 [11.46 dia.]	Ø 275 [10.83 dia.]
1	2	3	4						
1	7	1	0	Ø 220.7 [8.69 dia.]	Ø 275 [10.83 dia.]	Ø 314 [12.36 dia.]	253.25 [9.97]	Ø 334 [13.15 dia.]	Ø 285 [11.22 dia.]
1	2	3	4						
1	3	1	0	Ø 175.7 [6.92 dia.]	Ø 225 [8.86 dia.]	Ø 276 [10.87 dia.]	208.75 [8.22]	Ø 334 [13.15 dia.]	Ø 285 [11.22 dia.]
1	2	3	4						
1	4	1	0	Ø 220.7 [8.69 dia.]	Ø 254 [10.00 dia.]	Ø 285 [11.22 dia.]	163.2 [6.43]	Ø 334 [13.15 dia.]	Ø 175.7 [6.92 dia.]
1	2	3	4						
1	1	1	0	Ø 175.7 [6.92 dia.]	Ø 225 [8.86 dia.]	Ø 265 [10.43 dia.]	253.45 [9.98]	Ø 334 [13.15 dia.]	Ø 285 [11.22 dia.]
1	2	3	4						
1	2	1	0	Ø 220.7 [8.69 dia.]	Ø 275 [10.83 dia.]	Ø 314 [12.36 dia.]	253.25 [9.97]	Ø 291 [11.46 dia.]	Ø 275 [10.83 dia.]
1	2	3	4						
1	7	1	0	Ø 220.7 [8.69 dia.]	Ø 275 [10.83 dia.]	Ø 314 [12.36 dia.]	253.25 [9.97]	Ø 334 [13.15 dia.]	Ø 285 [11.22 dia.]
1	2	3	4						
1	3	1	0	Ø 175.7 [6.92 dia.]	Ø 225 [8.86 dia.]	Ø 276 [10.87 dia.]	208.75 [8.22]	Ø 334 [13.15 dia.]	Ø 285 [11.22 dia.]
1	2	3	4						
1	4	1	0	Ø 220.7 [8.69 dia.]	Ø 254 [10.00 dia.]	Ø 285 [11.22 dia.]	163.2 [6.43]	Ø 334 [13.15 dia.]	Ø 175.7 [6.92 dia.]
1	2	3	4						
1	2	1	0	Ø 220.7 [8.69 dia.]	Ø 275 [10.83 dia.]	Ø 314 [12.36 dia.]	253.25 [9.97]	Ø 291 [11.46 dia.]	Ø 275 [10.83 dia.]
1	2	3	4						
1	7	1	0	Ø 220.7 [8.69 dia.]	Ø 275 [10.83 dia.]	Ø 314 [12.36 dia.]	253.25 [9.97]	Ø 334 [13.15 dia.]	Ø 285 [11.22 dia.]
1	2	3	4						
1	3	1	0	Ø 175.7 [6.92 dia.]	Ø 225 [8.86 dia.]	Ø 276 [10.87 dia.]	208.75 [8.22]	Ø 334 [13.15 dia.]	Ø 285 [11.22 dia.]
1	2	3	4						


T E C H N I C A L C A T A L O G



CHARACTERISTICS

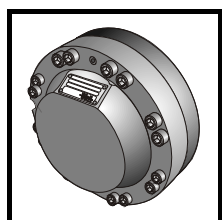


Motor inertia = 0.05 kg.m²

<div> Cams with equal lobes</div>		Displacement	Theoretical torque		Max.power	Max. speed	Freewheeling- Max. speed	Max. pressure
		cm³/tr [cu.in/rev.]	at 100 bar	at 1000 PSI	kW [HP]	tr/min[RPM]		bar [PSI]
			Nm	[lb.ft]				
MF08	8	627 [38,2]	997	[507]	41 [55]	150	1000	450 [6 530]
	9	702 [42,8]	1116	[568]		134		
	0	780 [47,6]	1240	[631]		121		
	1	857 [52,3]	1363	[693]		110		
	2	934 [57,0]	1485	[755]		101		
MFE08	8	838 [51,1]	1332	[678]	41 [55]	112	1000	400 [5 800]
	9	938 [57,2]	1491	[758]		100		
	0	1 043 [63,6]	1658	[843]		90		
	1	1 146 [69,9]	1822	[927]		82		
	2	1 248 [76,1]	1984	[1 009]		75		



CONTENT



MODEL CODE

5

Model code

VALVING SYSTEM AND HYDROBASES

Dimensions for 1-displacement valving
Cylinder block splines

7

7

8

Valving systems and hydrobases

OPTIONS

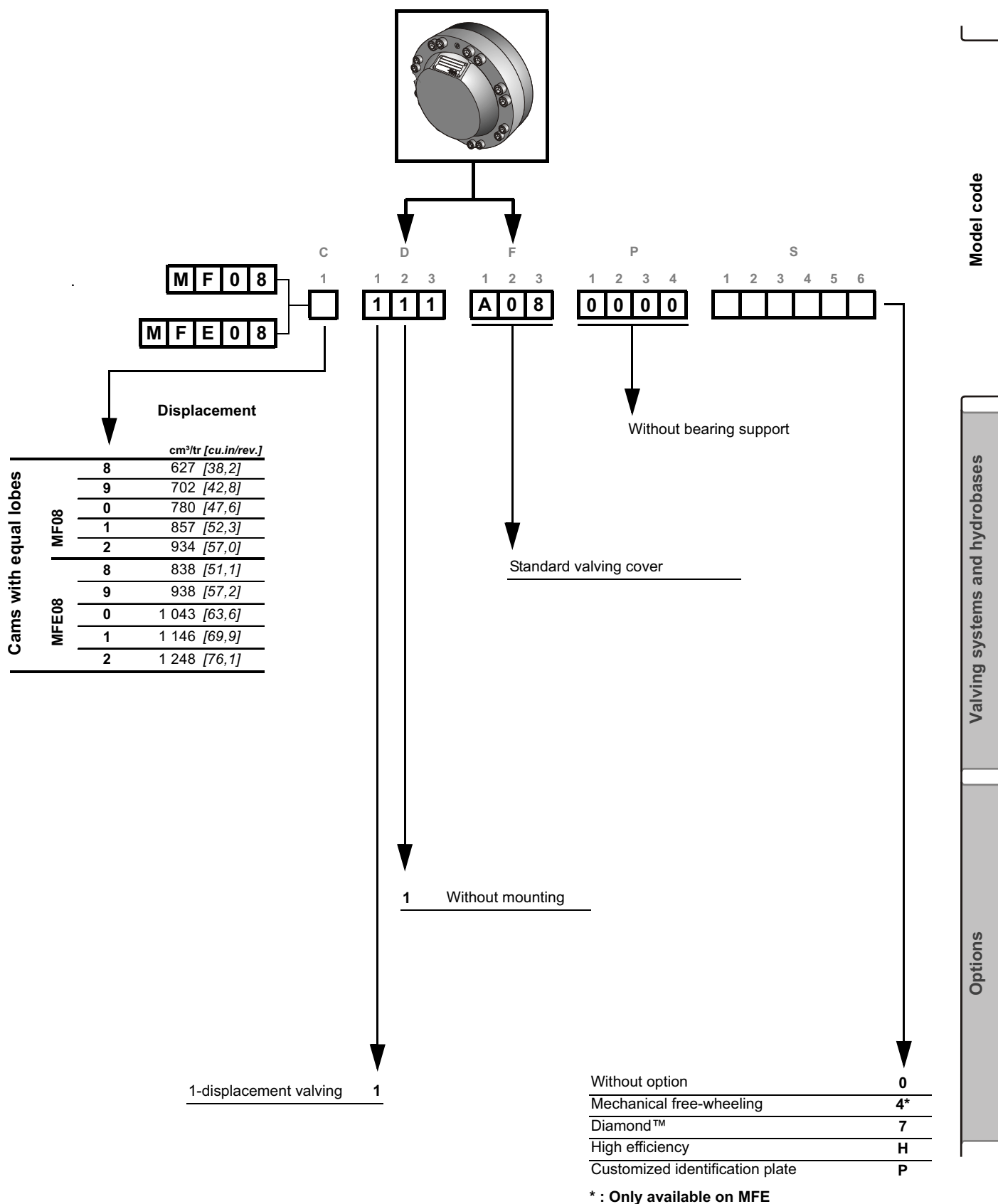
9

Options





MODEL CODE



**Methodology :**

This document is intended for manufacturers of machines that incorporate Poclain Hydraulics products. It describes the technical characteristics of Poclain Hydraulics products and specifies installation conditions that will ensure optimum operation. This document includes important comments concerning safety. They are indicated in the following way:

**Safety comment.**

This document also includes essential operating instructions for the product and general information. These are indicated in the following way:

**Essential instructions.****General information .****Information on the model number. Information on the model code.****Weight of component without oil.****Volume of oil.****Units.****Tightening torque.****Screws.****Information intended for Poclain-Hydraulics personnel.**

The views in this document are created using metric standards.

The dimensional data is given in mm and in inches (inches are between brackets and italic)





VALVING SYSTEM AND HYDROBASES

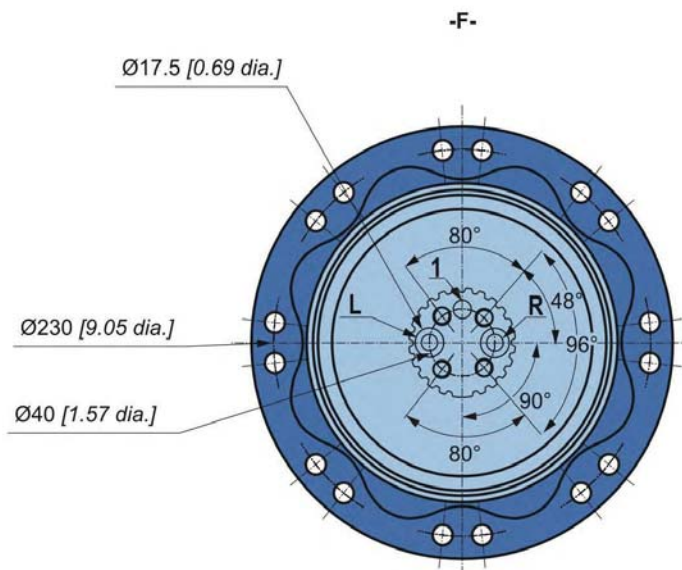
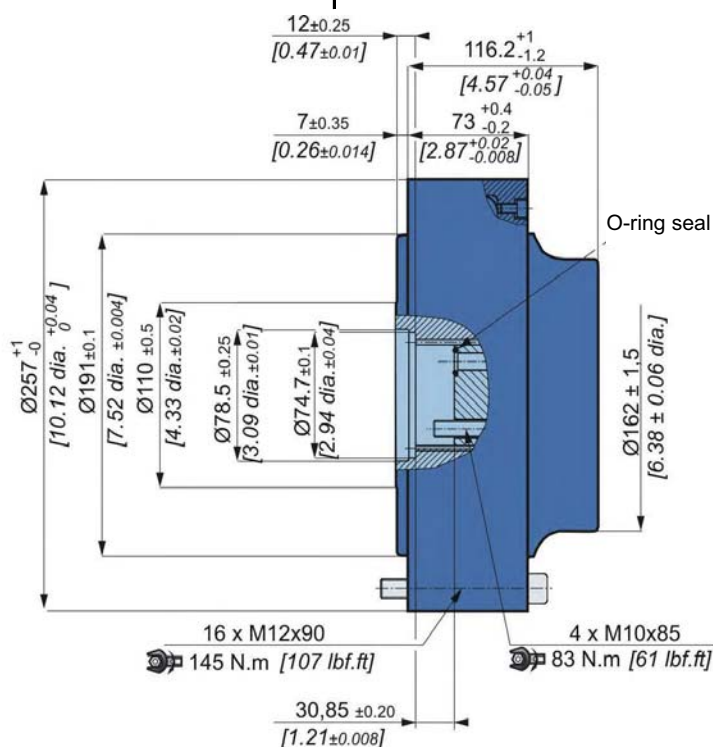
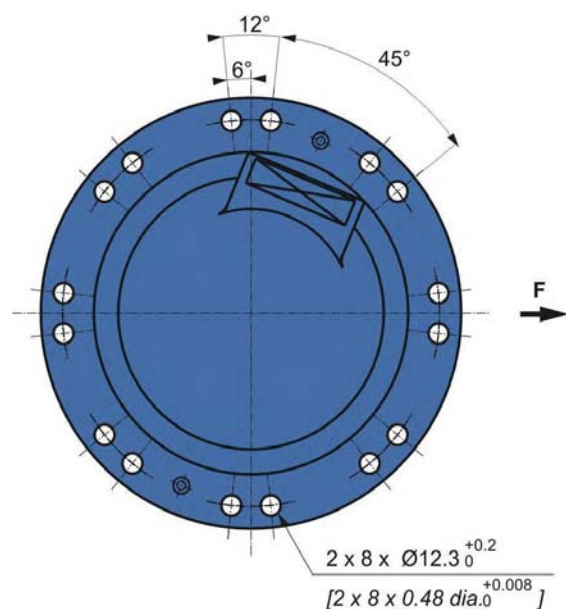
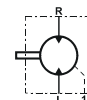
	C	D	F	P	S
	1	1 2 3	1 2 3	1 2 3 4	1 2 3 4 5 6
M F 0 8		1 1 1	A 0 8	0 0 0 0	
M F E 0 8					

Dimensions for 1-displacement valving



29,0 kg [64 lb]

0,50 L [30 cu.in]



Model code

Valving systems and hydrobases

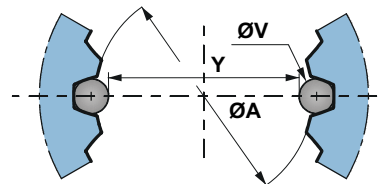
Options



Cylinder block splines

(as per standard NF E22-141)

Nominal Ø. mm [in]	ØA mm [in]	Module	Z	Dimension on 2 pins	
				Y mm [in]	ØV mm [in]
65,0 [2,559]	60,0 [2,362]	2,5	24	55,169 [2,172]	5,0 [0,197]



You are advised to have the installation validated by your Poclair Hydraulics application engineer before using the hydraulic unit in an application.



We must provide you with a detailed plan of the interface for any hydraulic unit use, consult your Poclair Hydraulics sales engineer.



OPTIONS

				C	D			F			P				S						
				1	1	2	3	1	2	3	1	2	3	4	1	2	3	4	5	6	
M	F	0	8																		
M	F	E	0	8		1	1	1	A	0	8	0	0	0	0						



You can accumulate more than one optional part. Consult your Poclain Hydraulics sales engineer.

4 - Mechanical Free-Wheeling

This option allows the pistons to return to their bores when there is no pressure in the supply lines.
Only available on MFE.

7 - Diamond™

Special treatment of the motor core which considerably increases its strength, making the motor much more tolerant to temporary instances of the operating conditions being exceeded.

H - High efficiency

Reinforced piston sealing to improve volumetric efficiency.



For a precise calculation, consult your Poclain Hydraulics application engineer.

P - Customized identification plate

Your part number can be engraved on the plate.



Consult your Poclain Hydraulics application engineer for other possibilities.

Model code

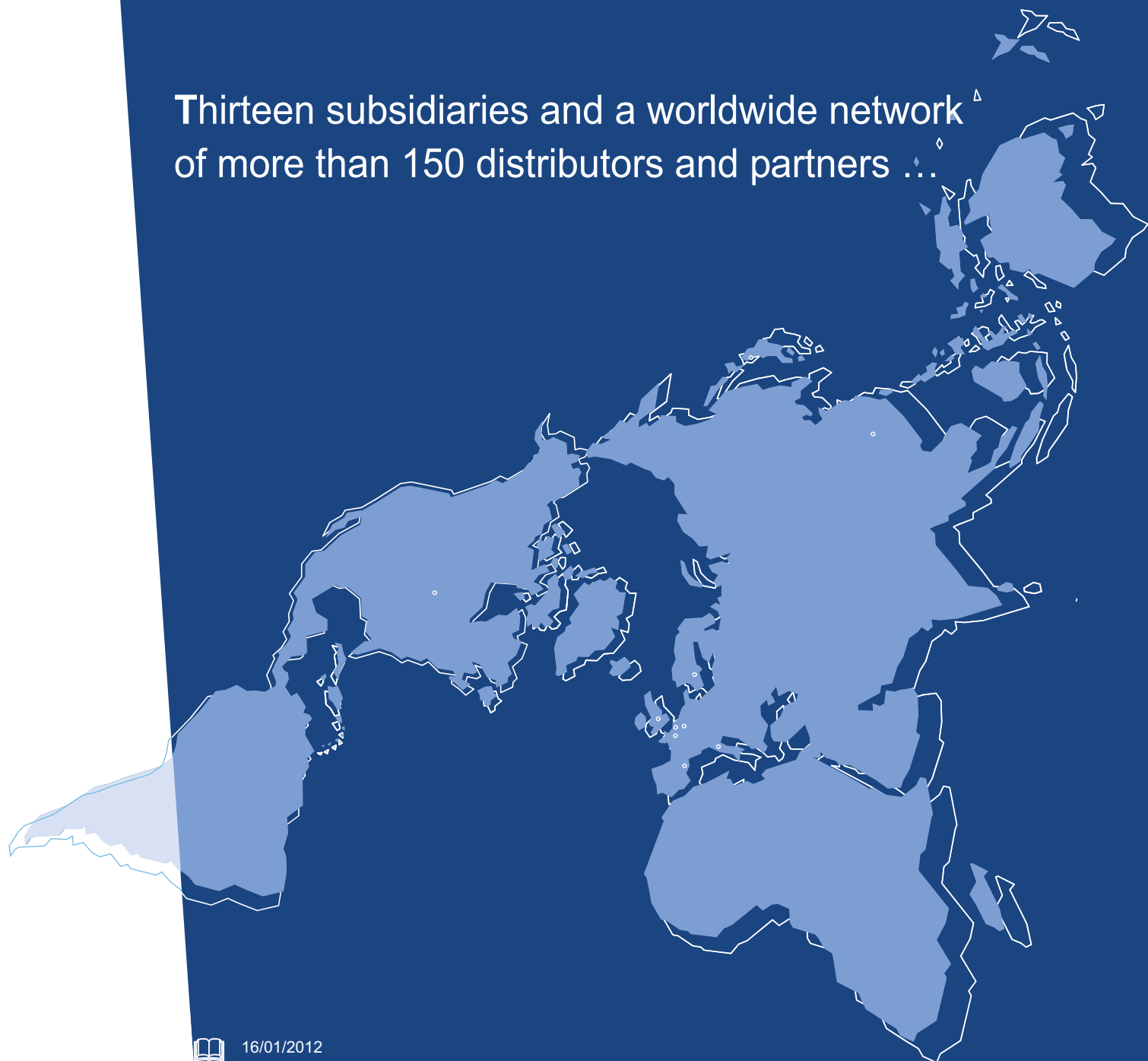
Valving systems and hydrobases

Options





Thirteen subsidiaries and a worldwide network
of more than 150 distributors and partners ...



16/01/2012

A12802Q

A12803R

A15272A



Poclain Hydraulics reserves the right to make any modifications it deems necessary to the products described in this document without prior notification. The information contained in this document must be confirmed by Poclain Hydraulics before any order is submitted.

Illustrations are not binding.

The Poclain Hydraulics brand is the property of Poclain Hydraulics S.A.



More information on

