

Intensifier System M- HC6 (up to 500 bar)



Description

The M- HC6 is a complete, ready- to- install, high- flow and high- pressure intensifier system. The system is based on the miniBOOSTER HC6 intensifier and includes integral high- flow bypass and isolation valves.

P_{IN} = 20– 300 bar
(inlet pressure)

P_H = 500 bar
(outlet pressure)

Q = 100 L/ min

Weight: 23 kg

Applications

The system is ideal for mobile attachments to take full advantage of the pump capacity for fast- forward movement of the hydraulic cylinder(s) and to boost pressure, when needed to achieve intensified (crushing/ clamping) pressures. Typical applications: Mobile attachments (cutters - crushers - shears) injection molding machines and hydraulic presses.

- Extra tough
- System is shipped completely assembled and factory- tested, ready for installation
- Provides high flow and high pressure
- Available with several intensification ratios
- Optional and multiple connection arrangements

Mounting options

The M- HC6 intensifier system can be tailor- made to match your application with the following options.

M- HC6-001

A variant designed to be flanged directly to the high- pressure cylinder. Supplied with 2 extra Pump P1 and Tank T1 ports (3/8" BSPP ports)

M- HC6-002

A variant designed to be flanged directly to the high- pressure cylinder. Supplied with 2 extra Pump P1 and Tank T1 ports (1/2" BSPP ports)

M- HC6-003

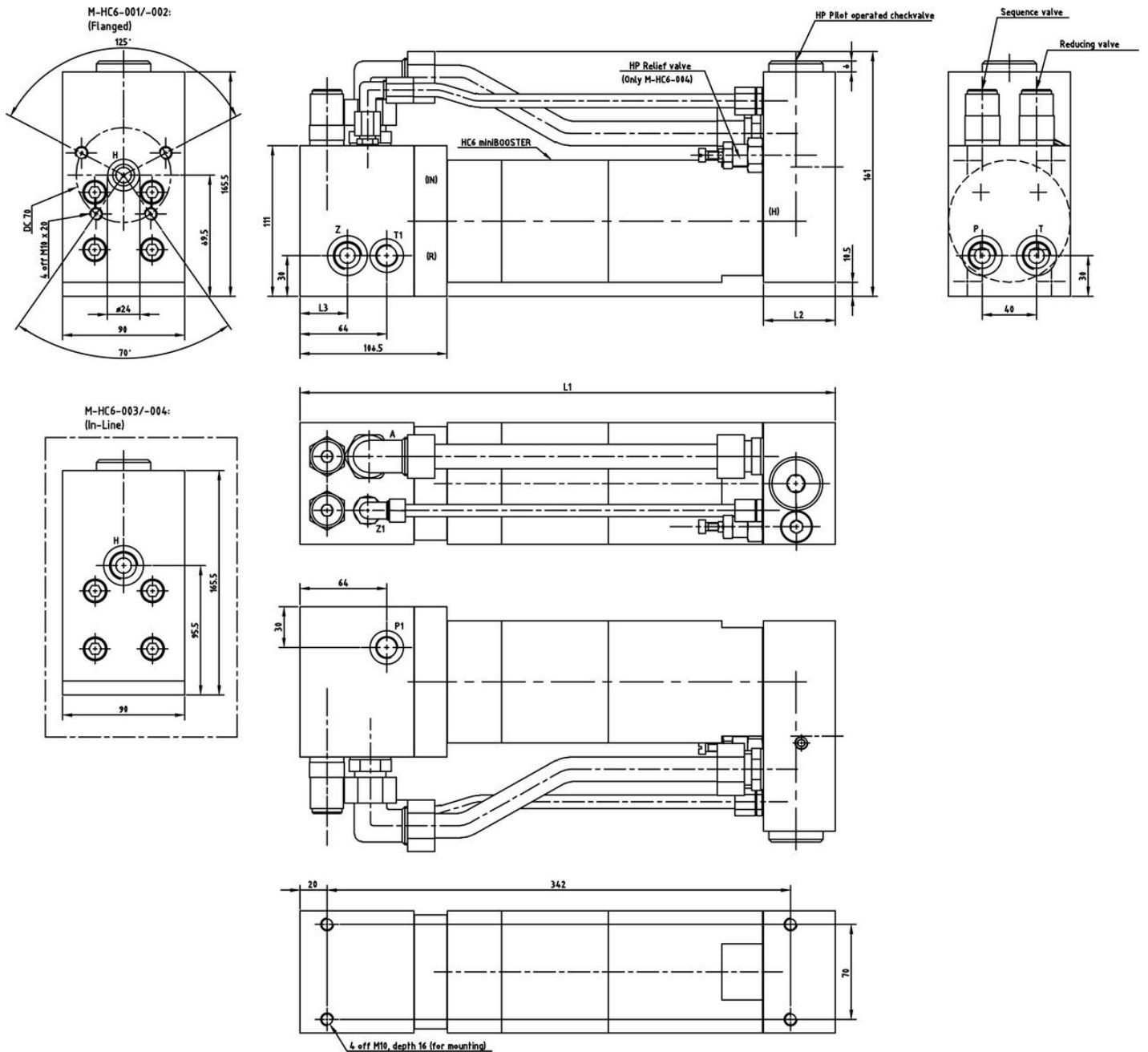
A variant with a 1/2" BSPP high- pressure port for tube or hose mounting

M- HC6-004

A variant with a 1/2" BSPP high- pressure port for tube or hose mounting and a pressure relief valve on the high- pressure side, eliminating critical pressure peaks from the high- pressure cylinder

Please send us your application needs in order to receive a proposal.

Dimensions



6-126

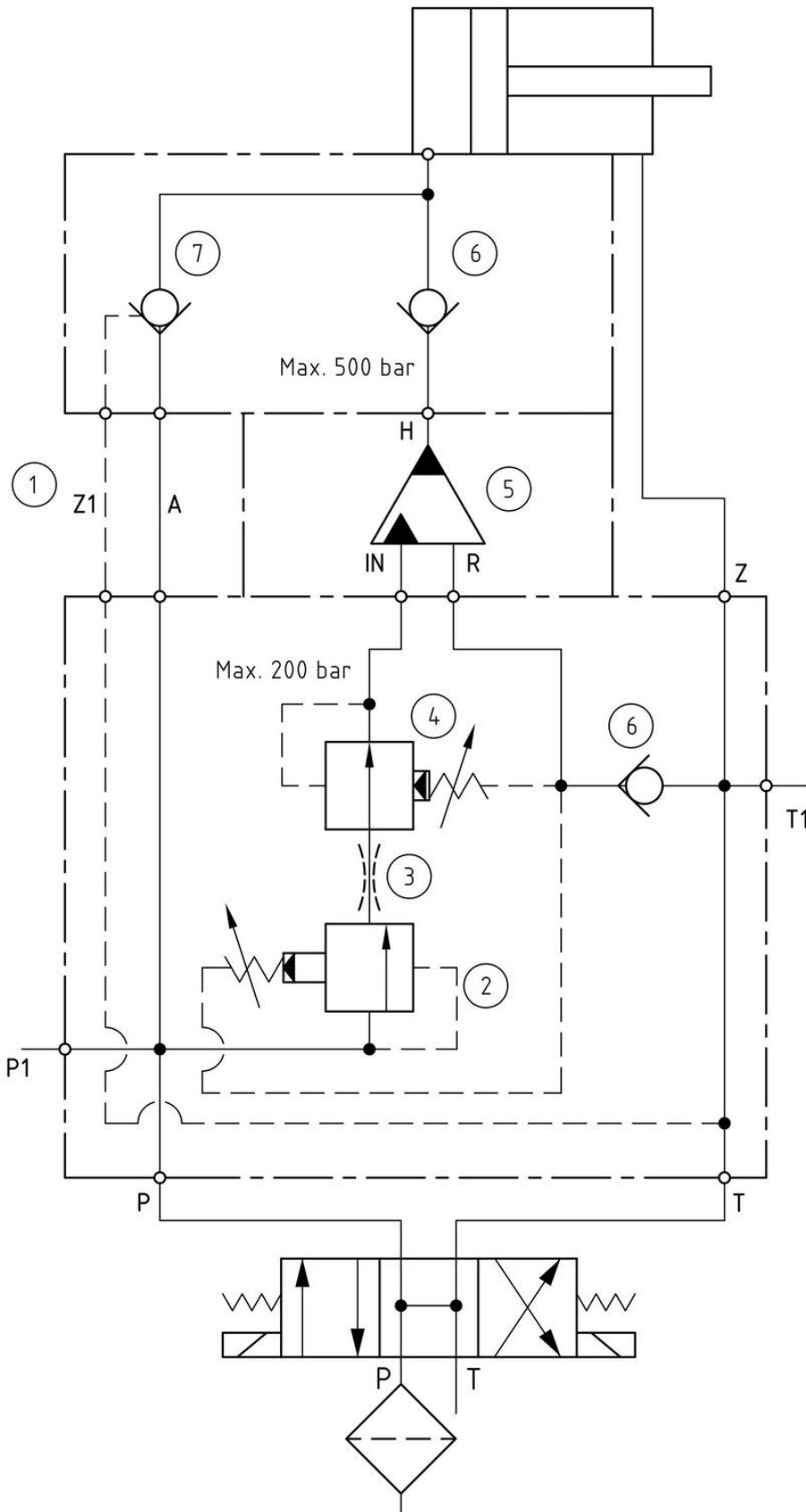
 PDF- Datei herunterladen: **6-122-05. Montagezeichnung. M- HC6-001**

 PDF- Datei herunterladen: **6-123-01. Montagezeichnung. M- HC6-002**

 PDF- Datei herunterladen: **6-124-01. Montagezeichnung. M- HC6-003**

 PDF- Datei herunterladen: **6-125-02. Montagezeichnung. M- HC6-004**

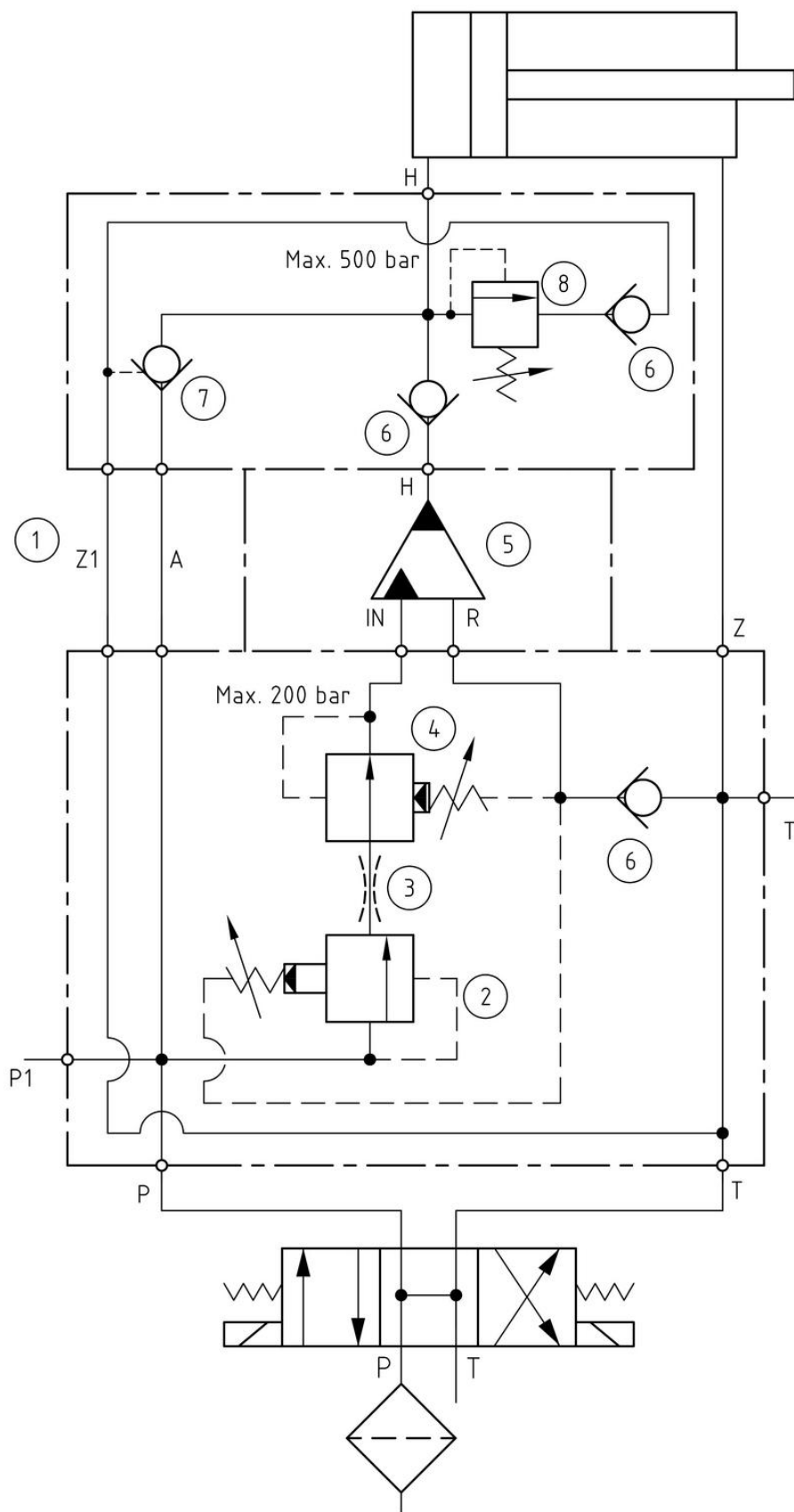
Functions Model M- HC6-001 / -002 / -003



- 1: By-pass system
M-HC6-001 / -002 / -003
- 2: Sequence valve
CP240-21B0AD0
Cavity: C10-3
Set: 90% of system pressure
- 3: (Option)
Blind \varnothing _ _ ; _ _ L/min.
- 4: Pressure reducing valve
CP230-4B0AC0 (Range:28-207 bar)
Cavity: C10-3
Set: Max. 200 bar
- 5: HC _ _ _ -A- _
- 6: Check valve (High pressure)
RK 2
- 7: Pilot operated check valve
(High pressure)
RHC 4V

Download PDF file: **0-262-05. Function diagram. M- HC6-00**

Functions Model M- HC6-004



- 1: By-pass system M-HC6-004 (✓) ✓
- 2: Sequence valve CP240-21B0AD0
Cavity: C10-3
Set: 90% of system pressure
- 3: (Option)
Blind \varnothing ___; ___ L/min.
- 4: Pressure reducing valve CP230-4B0AC0 (Range:28-207 bar)
Cavity: C10-3
Set: Max. ___ bar
- 5: HC ___ - ___ - A - ___
- 6: Check valve (High pressure) RK 2
- 7: Pilot operated check valve (High pressure) RHC 4V
- 8: Pressure Relief Valve CMV 1B-500 (Range: 0-500 bar)
Set: Max. ___ bar

Download PDF file: 0-289-02. Function diagram. M- HC6-004



Ordering an miniBOOSTER M- HC6

Model	Connections H	Options	Intensification
M- HC6-001	Flange	P1, T1 3/8" BSPP	1.9/2.5/3.3/4.0
M- HC6-002	Flange	P1, T1 1/2" BSPP	1.9/2.5/3.3/4.0
M- HC6-003	Tube 1/2" BSPP		1.9/2.5/3.3/4.0
M- HC6-004	Tube 1/2" BSPP	Relief valve on HP side	1.9/2.5/3.3/4.0

Ordering example of an M- HC6

An intensifier system M- HC6 for 500 bar 100 L/ min with 1/2" BSPP thread connection on high- pressure side, for tube mounting. Mounted with a HC6-2.5- A-1:

M- HC6-003 – 2.5 – A – 1